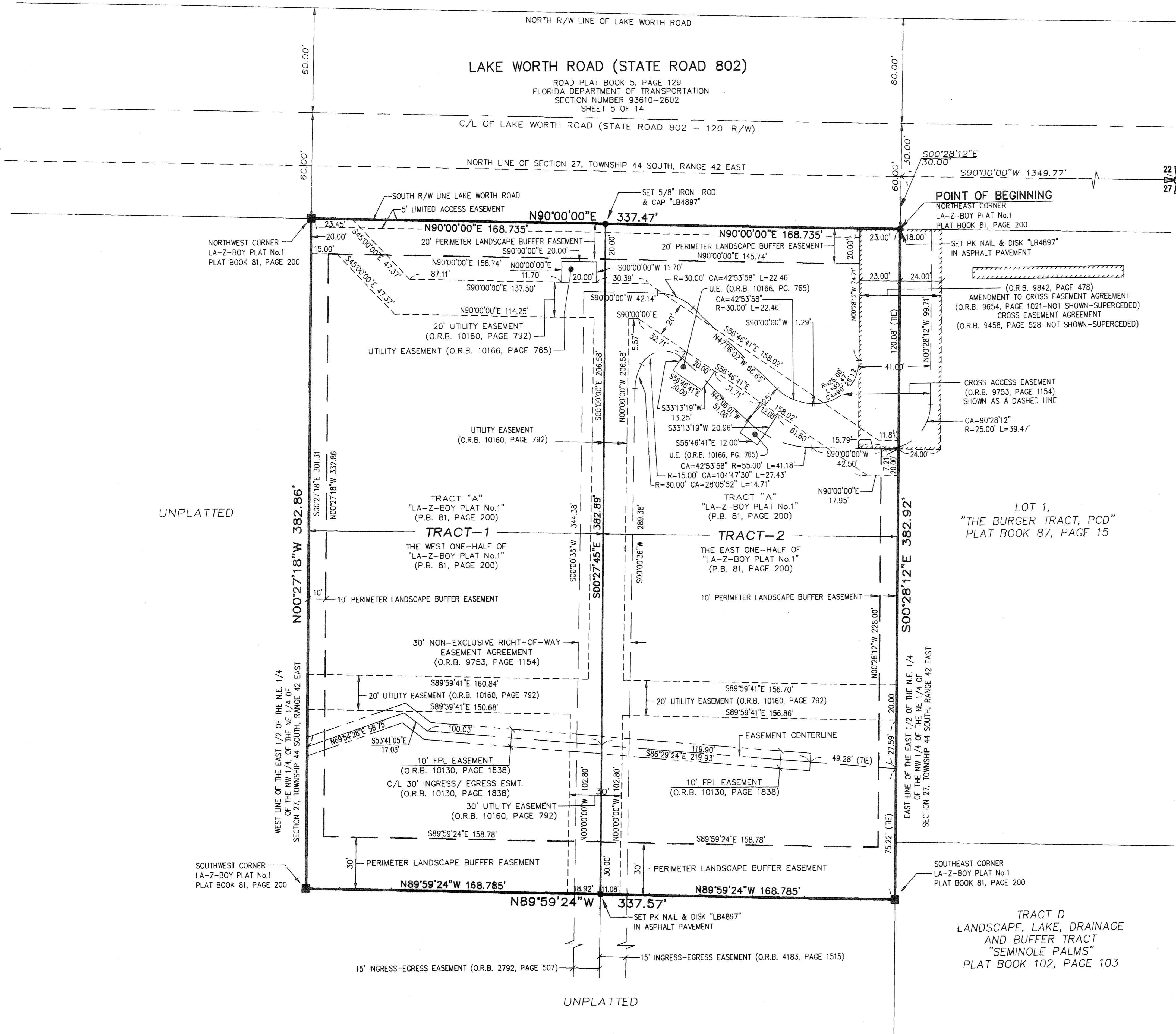
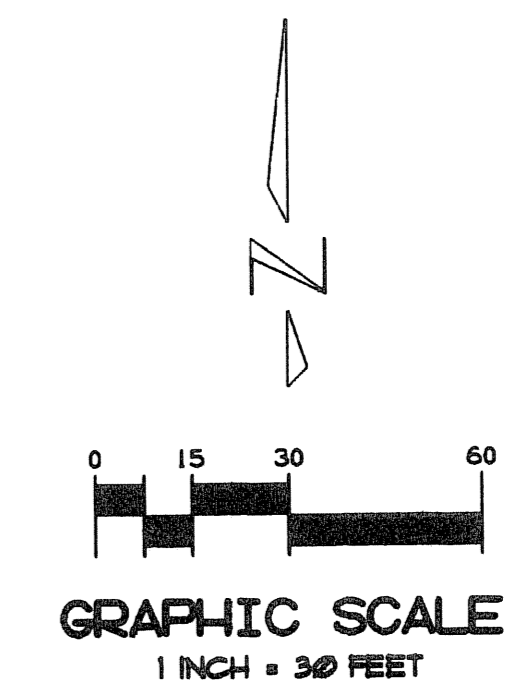


# LA-Z-BOY PLAT NO. 1 REPLAT

BEING A REPLAT OF LA-Z-BOY PLAT NO.1, ACCORDING TO THE PLAT THEREOF, AS RECORDED IN PLAT BOOK 81, PAGE 200 OF THE PUBLIC RECORDS OF PALM BEACH COUNTY, FLORIDA AND LYING IN SECTION 27, TOWNSHIP 44 SOUTH, RANGE 42 EAST, CITY OF GREENACRES, PALM BEACH COUNTY, FLORIDA

14



- LEGEND**
- R = RADIUS
  - CA = CENTRAL ANGLE
  - L = ARC LENGTH
  - R/W = RIGHT-OF-WAY
  - ORB = OFFICIAL RECORDS BOOK
  - C/L = CENTERLINE
  - U.E. = UTILITY EASEMENT
  - L.A.E. = LIMITED ACCESS EASEMENT
  - ESMT. = UTILITY EASEMENT
  - FPL = FLORIDA POWER & LIGHT
  - P.B. = PLAT BOOK
  - PAGE = PAGE
  - = SET PERMANENT REFERENCE MONUMENT 4"x4" CONCRETE MONUMENT WITH DISK STAMPED "PRM LB 4897"
  - = SET 5/8" IRON ROD AND PLASTIC CAP STAMPED "LB4897"
  - = SET PK NAIL & DISK "LB4897"

**Keshavarz & Associates, Inc.**  
 CONSULTING ENGINEERS - SURVEYORS  
 711 N. Dixie Highway, Suite 201  
 West Palm Beach, Florida 33401  
 Tel: (561) 689-9600 Fax: (561) 689-7476 LB 4897  
 THIS INSTRUMENT WAS PREPARED BY MICHAEL E. HORAN SR., PSM  
 PROFESSIONAL SURVEYOR AND MAPPER NO. 5494  
 IN THE OFFICES OF KESHAVARZ & ASSOCIATES, INC.



Z:\2005\05-02\20 LA-Z-BOY-Plat\_Correc\05-023 REPLAT.dwg 2/13/2006 04:02:47 AM EST